

Preview to Activities

Grasse River Remediation Project

January 16, 2019



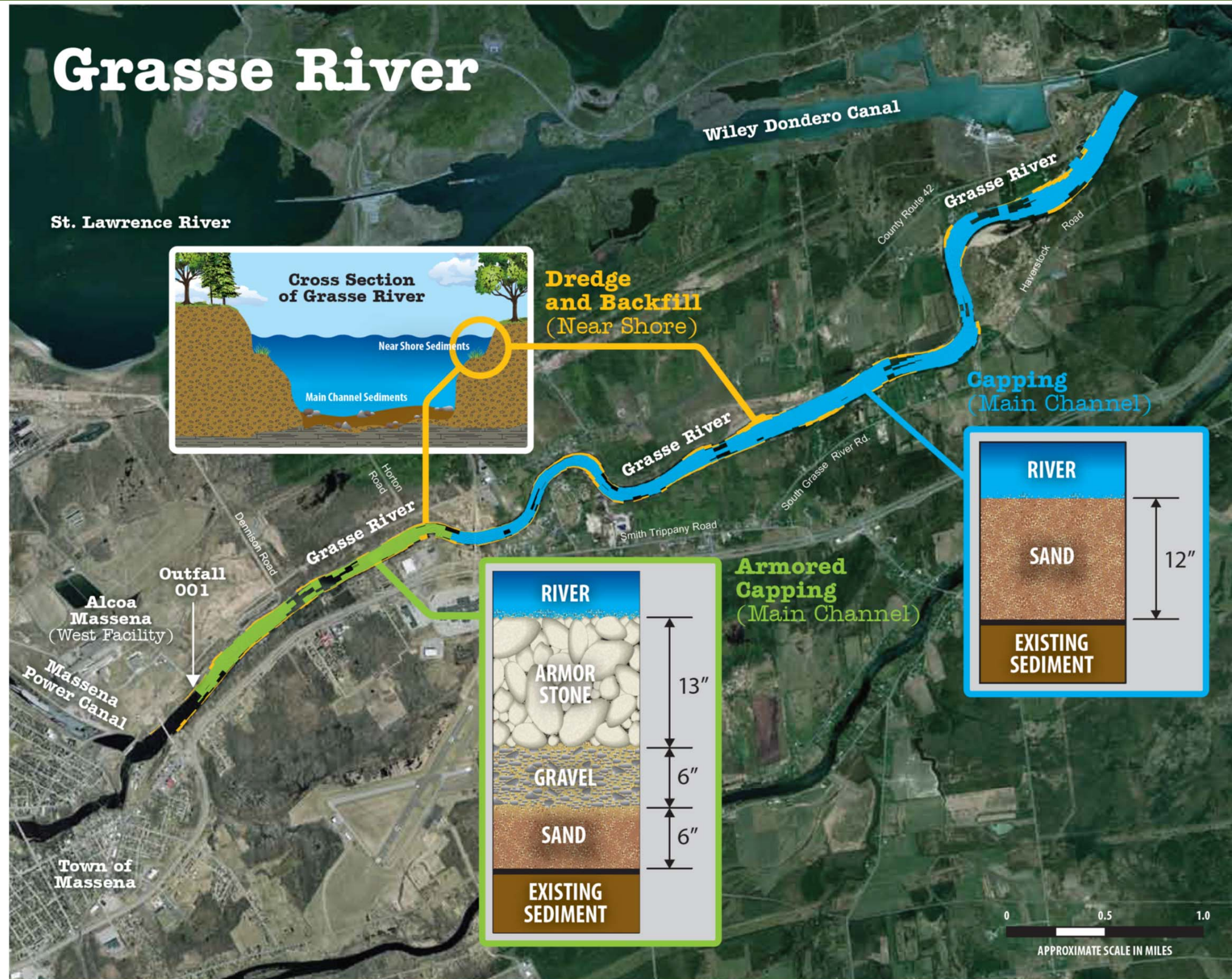
Topics to be Covered

Meeting agenda

- Introductions
- Project overview
- What to expect during in-river work
- Monitoring
- Boating and swimming safety
- Question and answer



USEPA Selected Grasse River Remedy



Already Completed: 2017-2018 Remediation and Support Work

Work performed to prepare for in-river remediation work

- ❑ Expanded the secure landfill on the Arconic Massena West property
- ❑ Constructed staging area on the north shore near the Route 131 bridge
- ❑ Remediated the Unnamed Tributary



Already Completed: 2017-2018 Remediation and Support Work (Cont'd)

Work performed to prepare for in-river remediation work (cont'd)

- ❑ Remediated soil areas along north shore just downstream of Alcoa Road Bridge
- ❑ Performed in-river capping test to verify construction sequencing



What's Next: Grasse River Remediation Project Activities

Limited winter preparation work and other activities

- ❑ Tree trimming
- ❑ Contractor/equipment mobilization and dock removal
- ❑ Remediate soil area along north shore just upstream of Alcoa Road Bridge



What's Next: Grasse River Remediation Project Activities (Cont'd)

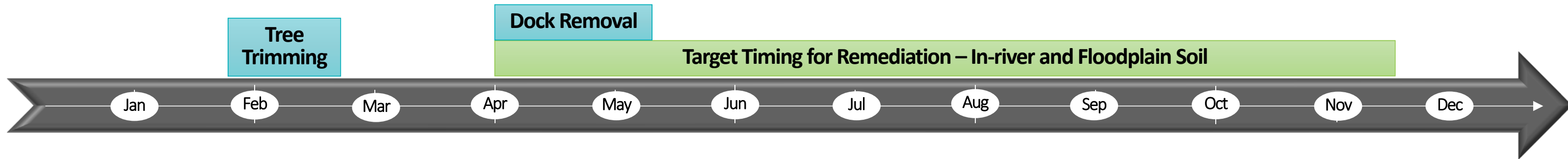
In-river remediation tasks

- ❑ Near shore sediment and floodplain soil removal
- ❑ Material processing at the staging area
- ❑ Dispose materials at the secure landfill
- ❑ Cap material handling area construction
- ❑ Near shore backfill and restoration
- ❑ Cap material placement



What to Expect During In-river Work: Schedule

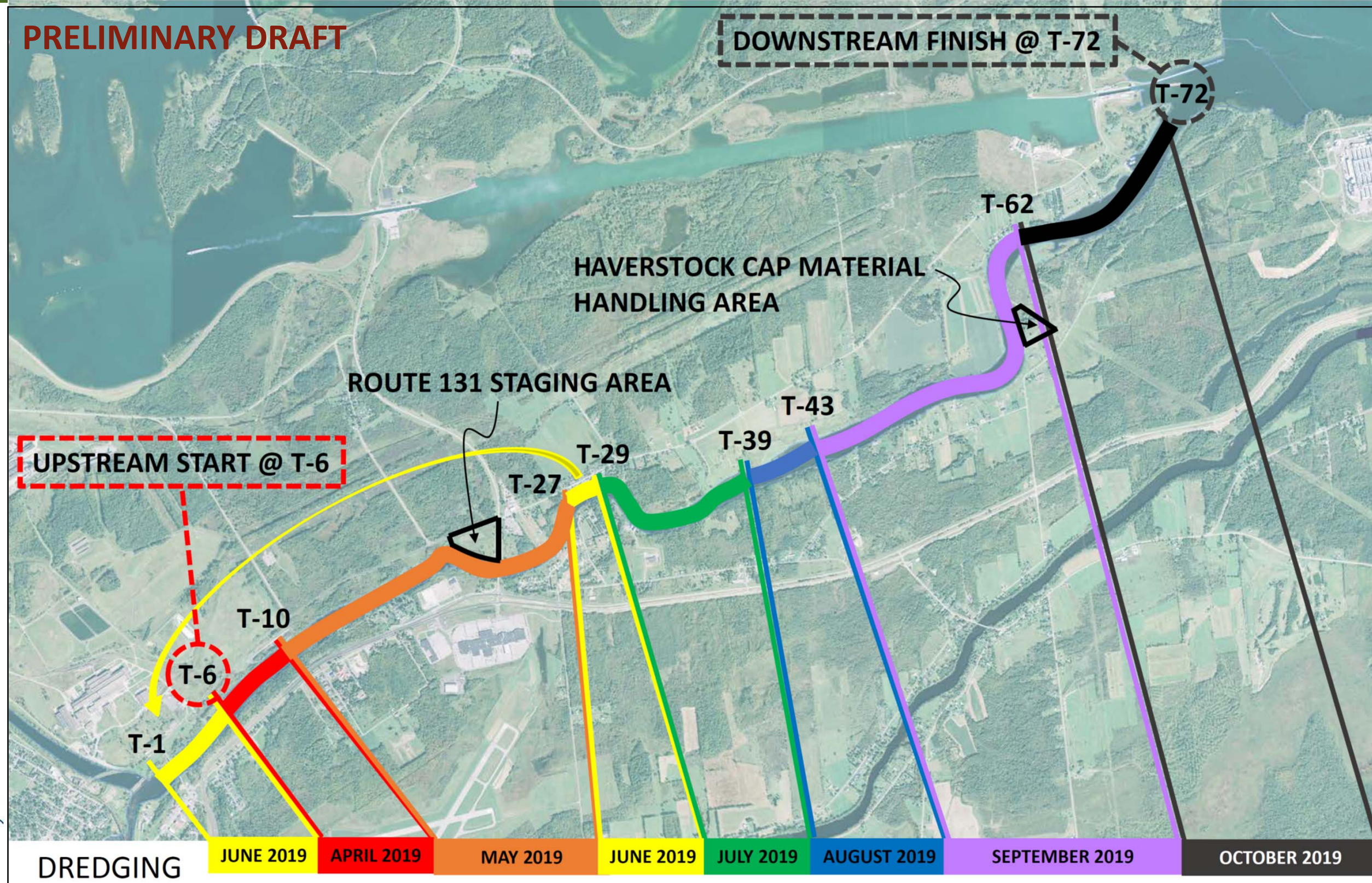
Schedule to be confirmed based on ongoing Agency coordination and weather conditions



- ❑ Work targeted for 6 days per week, 12 hours per day on river
 - Night work at staging area
 - Work planned for 24 hours per day on river in future years
- ❑ Work to generally be performed upstream to downstream
 - Most upstream area work will not start until mid-June to protect lake sturgeon



What to Expect During In-river Work: 2019 Target Schedule for Dredging



What to Expect During In-river Work: Along/On River Properties

Arconic to work with individual affected property owners to provide additional details on work and coordinate efforts

- ❑ Tree trimming and chipping
 - Current plan is to access trees from river on the ice
- ❑ Dock removal if located in remediation areas
 - Request docks not be placed in river if removed for winter
- ❑ Floodplain soil removal in limited areas
- ❑ Near shore sediment removal



What to Expect During In-river Work: Other Things to Note

Working with the contractor and local authorities to limit the impact to residents

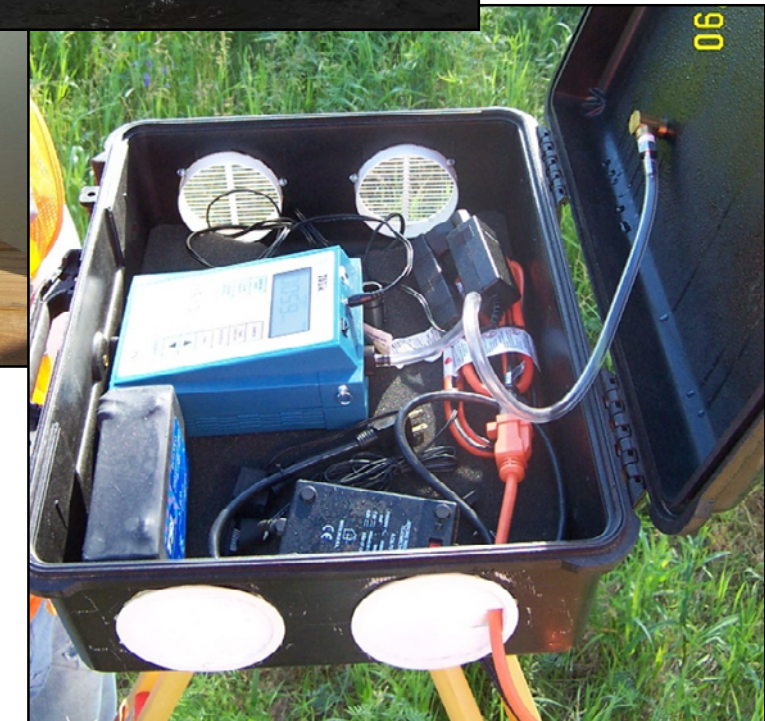
- ❑ Possible noise and associated controls and monitoring
- ❑ Lighting for worker safety and controls
- ❑ Site security
- ❑ Vehicle and boat traffic plans



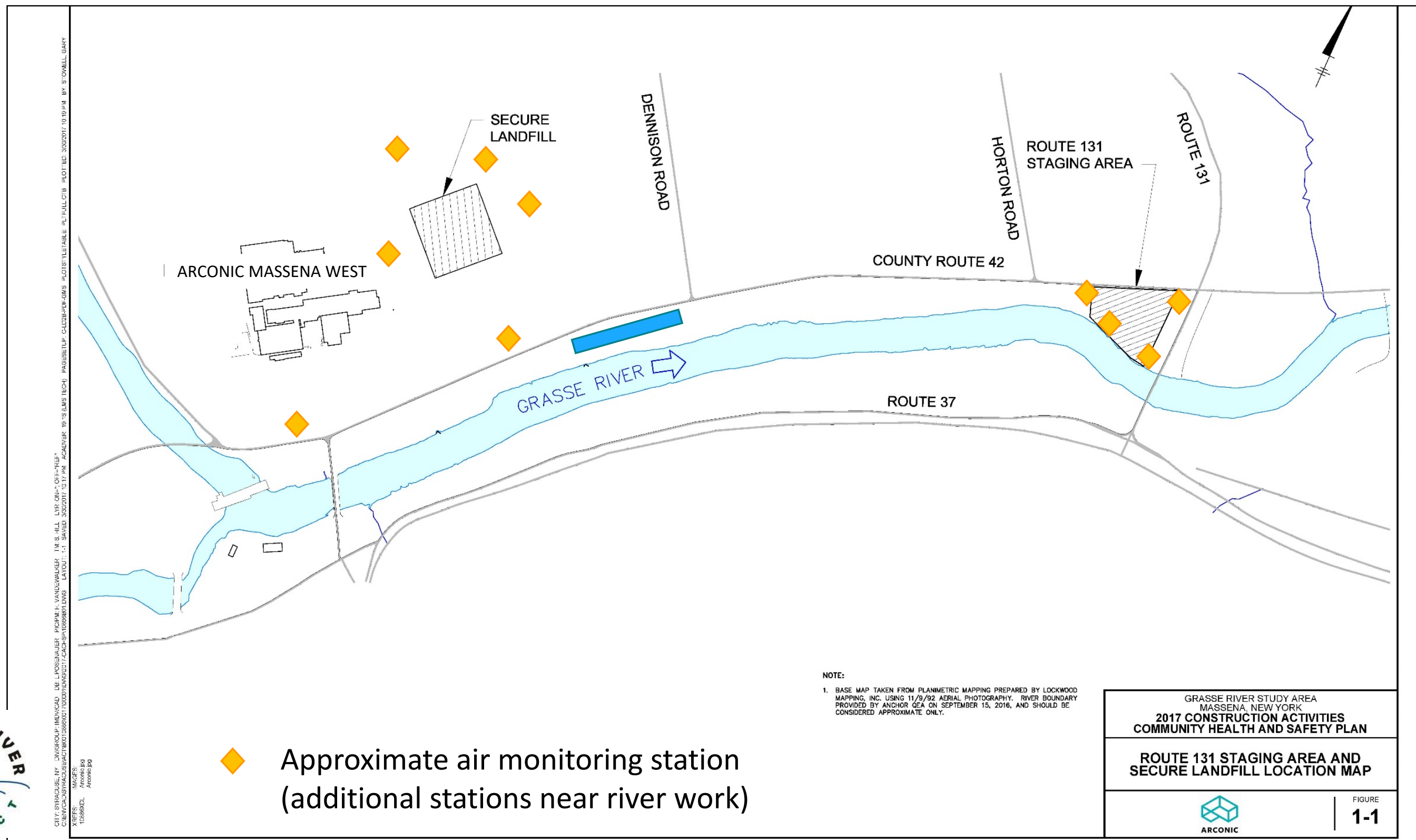
What to Expect During In-river Work: Monitoring

Working with the contractors and local authorities to limit the impact to residents

- ❑ Community health and safety plan outlines measures to protect the surrounding community
- ❑ Air monitoring
 - PCBs, dust, and volatile organic compounds (VOCs)
- ❑ Water monitoring
 - PCBs and turbidity
- ❑ Corrective action levels

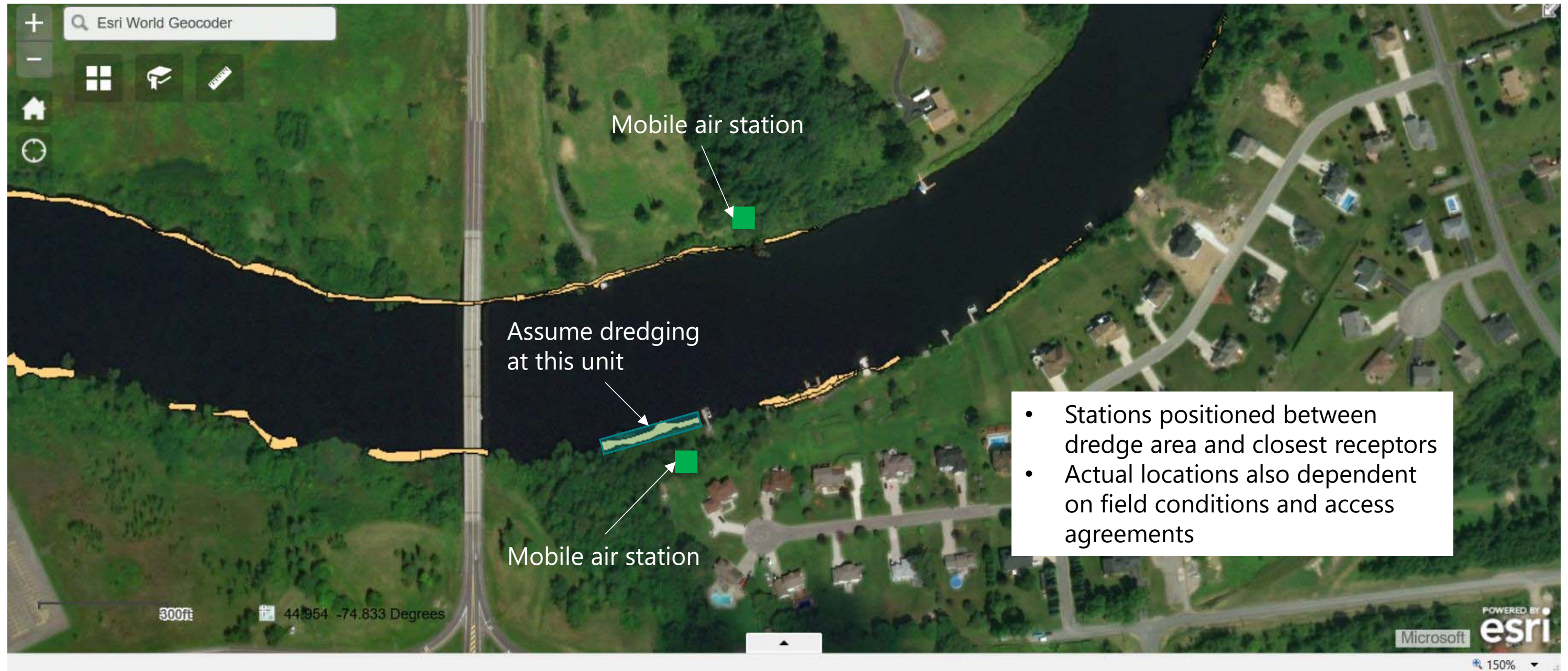


Air Monitoring Stations at Landfill and Staging Area



CITY: SYRACUSE, NY DIVISION: ENVIRONMENTAL SERVICES PROJECT: GRASSE RIVER STUDY AREA DRAWING: GRASSE RIVER STUDY AREA 2017 CONSTRUCTION ACTIVITIES COMMUNITY HEALTH AND SAFETY PLAN ROUTE 131 STAGING AREA AND SECURE LANDFILL LOCATION MAP DATE: 10/19/2017 10:19:20 AM BY: S. COWELL, GARY

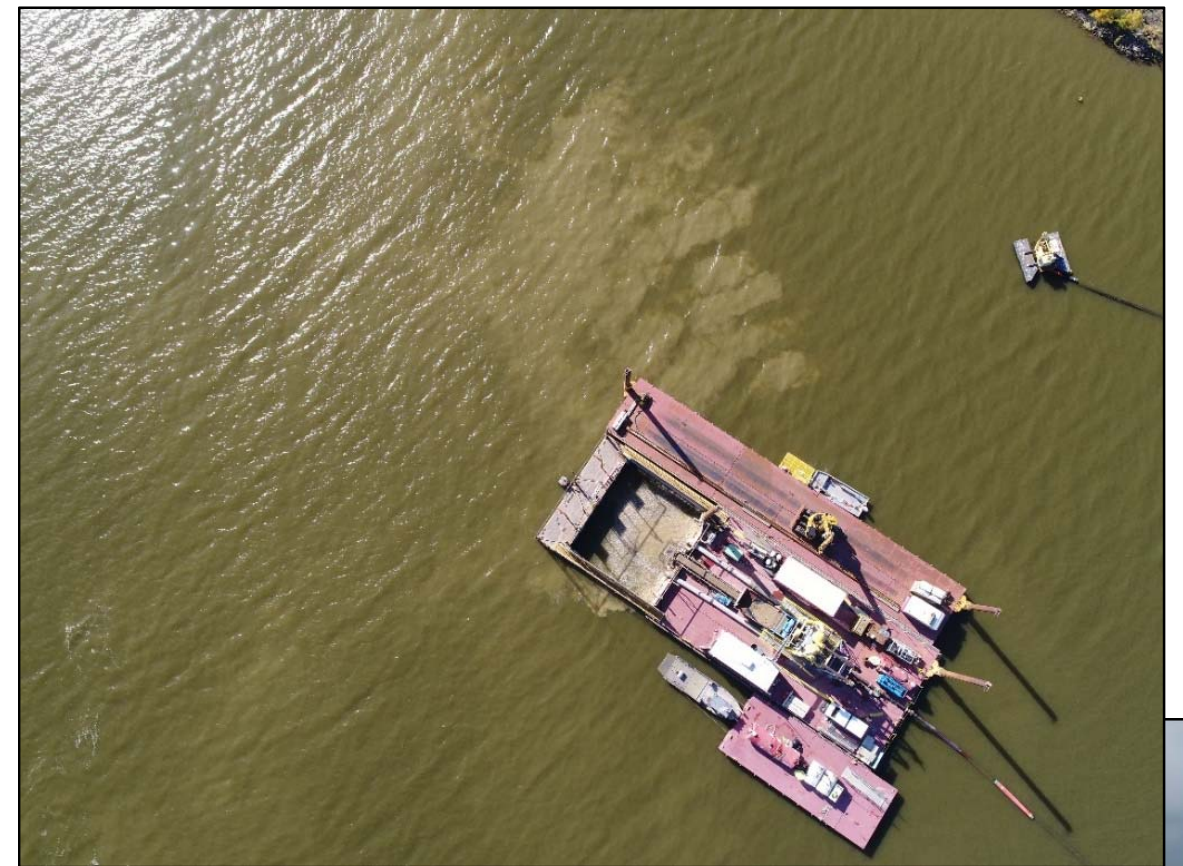
Typical Air Monitoring Stations Near Dredge Work (Example Only)



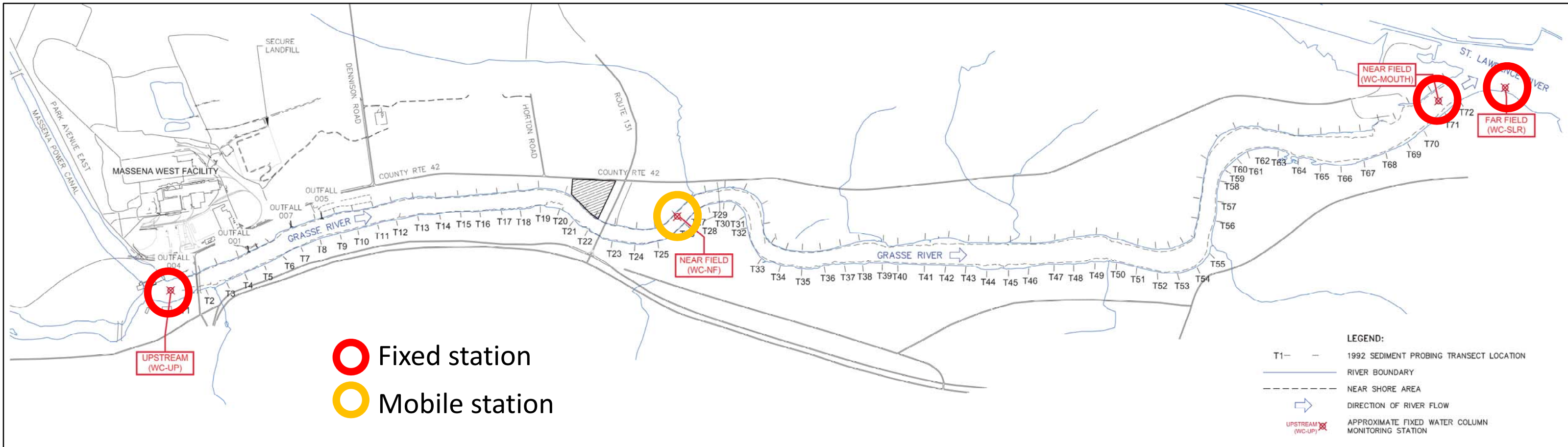
What to Expect During In-river Work: Turbidity

Turbidity expected during material placement in the river

- ❑ What is turbidity?
 - Measure of water clarity and how much the material suspended in water decreases the passage of light (USEPA)
 - Increased turbidity (cloudiness) expected
- ❑ Does it pose a concern?
 - Removal will likely suspend target sediment
 - Materials to be placed are clean
 - Monitoring and corrective action levels will be in place
- ❑ How much is expected?
 - Visible impacts expected and will return to natural conditions following work



Water Column Monitoring Planned Locations



Water Intake Monitoring Locations



Boating and Swimming Safety

Please take precautions near active work areas and stay clear to keep safe

❑ Boating

- Requesting reduced boat speed and safe distance near active work areas
- Work areas will be identified with floating signs

❑ Swimming

- Avoid swimming near or immediately downstream of any active work areas
- Refer to guidance contained in NYS Department of Health swimming factsheet



For More Information on the Grasse River Remediation Project

USEPA and Arconic will be reaching out in various ways

- ❑ EPA community meetings and Arconic mailers/communications
- ❑ Visit the project website: www.thegrasseriver.com
- ❑ Contact the following individuals:

Young Chang	US Environmental Protection Agency	Phone: 212-637-4253 Email: chang.young@epa.gov
Larry McShea	Arconic Project Manager	Phone: 724-337-5458 Email: Larry.McShea@arconic.com
Sue Flynn	Arconic Community Relations	Phone: 315-764-4400 Cell: 315-842-2117 Email: Susan.Flynn@arconic.com
David Tromp	NYS Department of Environmental Conservation	Phone: 518-402-9786 Email: david.tromp@dec.ny.gov
Scarlett McLaughlin	NYS Department of Health, Bureau of Environmental Exposure Evaluation	Phone: 518-402-7860 Email: BEEI@health.ny.gov
Jay Wilkins	St. Regis Mohawk Tribe	Phone: 518-358-5937, ext. 123 Email: jay.wilkins@srmt-nsn.gov

